



CONTRACT NO. ZNB00557/00000/00/PMC/INF/21/T: REGRAVELLING OF D389 (KM 0.000 TO KM 9.675) IN THE MKHAMBATHINI LOCAL MUNICIPALITY (KZ226), COST CENTRE PIETERMARITZBURG

BRIEFING NOTES FOR D389

Pay careful attention to page T4, T1.1 Tender notice and invitation to tender as the most important information is highlighted there. Note that an electronic AND hard copy must be submitted as requested in the tender notice.

Pay special attention to all the pages that contain this heading -

Failure to complete, sign and date this form or failure to acknowledge receipt of each Addendum issued or failure to return with the quotation submission a complete copy of each Addendum issued shall result in the quotation being considered non-responsive in terms of subclause F.3.8 of the Conditions of Tender and such a quotation shall be rejected.

If this heading is displayed and a contractor feels that it is **N/A** and **does not** sign the page, the tender will be **non-responsive**. The content may be marked as **N/A** if so applicable as is generally the case with Page T24 but the **Bidder must still sign and date the required spaces as instructed**. Please note initialling the bottom of the page is not seen as a signature it is simply acknowledging that the bidder has seen the page and is aware of what is in his/her document.

Page T14 must be completed in full. Pay special attention to the highlighted sections-

SUPPLIER COMPLIANCE STATUS	TAX COMPLIANCE SYSTEM PIN:	OR	CENTRAL - SUPPLIER DATABASE No:	MAAA
B-BBEE STATUS LEVEL VERIFICATION CERTIFICATE	TICK APPLICABLE BOX) <input type="checkbox"/> Yes <input type="checkbox"/> No	B-BBEE STATUS LEVEL SWORN AFFIDAVIT	TICK APPLICABLE BOX) <input type="checkbox"/> Yes <input type="checkbox"/> No	
[A B-BBEE STATUS LEVEL VERIFICATION CERTIFICATE/ SWORN AFFIDAVIT (FOR EMES & QSEs) MUST BE SUBMITTED IN ORDER TO QUALIFY FOR PREFERENCE POINTS FOR B-BBEE]				
ARE YOU THE ACCREDITED REPRESENTATIVE IN SOUTH AFRICA FOR THE GOODS /SERVICES /WORKS OFFERED?	<input type="checkbox"/> Yes <input type="checkbox"/> No [IF YES ENCLOSE PROOF]	ARE YOU A FOREIGN BASED SUPPLIER FOR THE GOODS /SERVICES /WORKS OFFERED?	<input type="checkbox"/> Yes <input type="checkbox"/> No [IF YES, ANSWER PART B.3]	

Are you a foreign based supplier – This answer should generally be **No** and the bottom section (QUESTIONNAIRE TO BIDDING FOREIGN SUPPLIERS) does not need to be completed as the contractor has already indicated that he is not a foreign based supplier.

T15 must be completed and signed thus accepting the terms for bidding.

SBD 4 , 8 and 9 are extremely important and failing to **answer all the questions** as required also lead to a bidder’s offer being seen as **non-responsive**. This has occurred on numerous occasions.

SBD 6.1 Note 6.1 must be completed to claim BBEE Points. It should be completed as follows:
B-BBEE Status Level of Contributor: *1 (As the BBEE level the bidder’s certificate or affidavit grants)*
= ...20 (Correlating points to level – see table 4.1) (maximum of 20 points)

SBD 6.2 is not applicable to this Contract.

Returnable D – T35 – Generally the simplest and most frequent submission is a Sworn Affidavit. It should be noted that an affidavit must be an original that is certified by a commissioner of oaths. If a copy is submitted the contractor will not be awarded any preferential points and therefore lose out on 20 points. On the Affidavit one question is regarding the financial year for which the affidavit is done. This must be the latest financial year and not older than 12 months from date of closing of the bid, but also this time cannot be in the future, eg. February 2022. All provisions for disclosing information under Oath must be complied with to ensure the affidavit is acceptable. For BBBEE certificate – these must be submitted as a copy – no need of certification.

Returnable E on page T36 must be completed and signed by all members/directors. If one of the members/directors fails to sign it is seen as a **non-responsive** document due to the directors/members not being aware of the tender submission. Also ensure that the specimen signature does appear on the resolution letter of the company owners attached to this returnable.

Returnable G T38 must be completed and have CV's attached as is indicated at the top of the Page. G2 has been redacted and it is not necessary to complete this section.

Returnable J – T44 Must be signed, dated and completed as indicated on the bottom of page T44. Please follow the instructions on page T43 on how to calculate the minimum labour percentage and note that the specified minimum labour percentage is **4.0%** as indicated. While tendering below the minimum is no longer a disqualification criteria, a penalty would apply to the bid if awarded for not achieving the minimum target.

Returnable K – T45 Must be completed correctly and signed. This should be read and completed accordingly. Question 3 has three sub headings. Generally, the contractor will answer yes to only one of these. The corresponding number in question 4 must then also be completed. Example – If 3(a) is answered yes then the contractor must answer 4(a) as well, If 3(b) then 4(b) etc.

Page C3 as the form of offer must be signed and the amount in words must be completed failure to do this will invalidate the tender.

Please check that the amount on C3(For of Offer) and C39(BOQ Summary) match.

On a contractual note the following must be mentioned:

The construction period is 5 months and failure to complete the project within the specified timeframe will result in penalties. It is of extreme importance that these risks be factored into the pricing of the documents as the bidders' price is also compared to realistic market value of the works that has been assessed by a third party to guide if the quoted price is reasonable.

LOCALITY PLAN

District Road D389 is located in KZ226 within DC 22, Locality of the roads is indicated in blue below:-

PMB Region Viewer

Page 1 of 1



etermaritzburg map data...

Sign in

D389

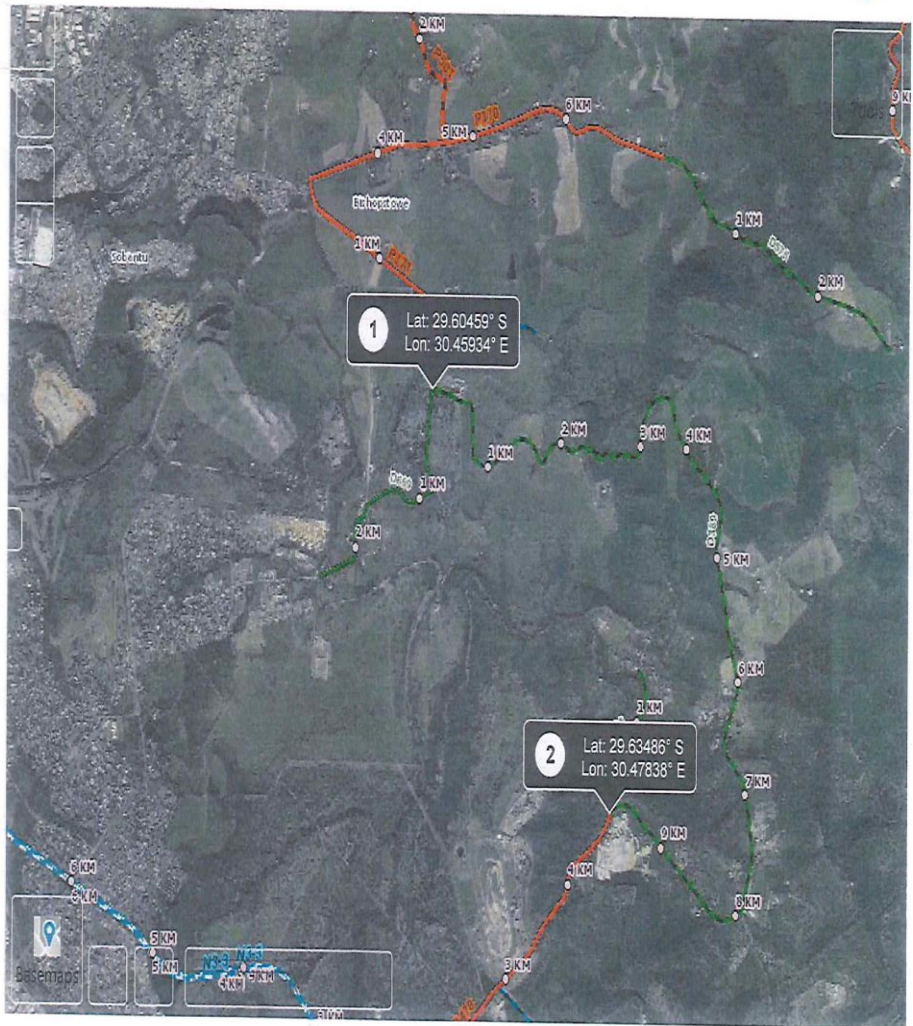
Details

FID
260

ROADNUM
D389

CLASS
D

Km
9.675



<https://gis1.kzntransport.gov.za/DOtpmb/>

2021-04-22

Locality Plan of Road D389

The approximate limits of construction can be seen in **Table C4.1**.

Table C4.1 – Approximate project limit of construction co-ordinates

Road Name	Km	Latitude	Longitude
D389	Km 0.000	29.60459°S	30.45934°E
	Km 9.675	29.63486°S	30.47838°E

PROJECT BACKGROUND

Upon assessing D389 it was determined that the current condition of the roads are such that preventative maintenance is required to prevent further degradation of the surface, and to provide an adequate riding surface for the roads. It is therefore required that the gravel wearing course be reinstated to the minimum required 150mm for both roads.

WARD

D389 is located in ward 1 under the Mkhambathini local municipality KZN226, in the uMgungundlovu District Municipal.

TRIBAL COUNCIL

D389 is under iNkosi N. Maphumulo and Cllr. R.N. Zondo

FACILITIES AND SERVICES ALONG THE ROAD.

There are no known services along the road.

TERRAIN

The gravel roads are on a rolling to steep terrain.

CONDITION OF THE CURRANT GRAVEL ON THE ROAD

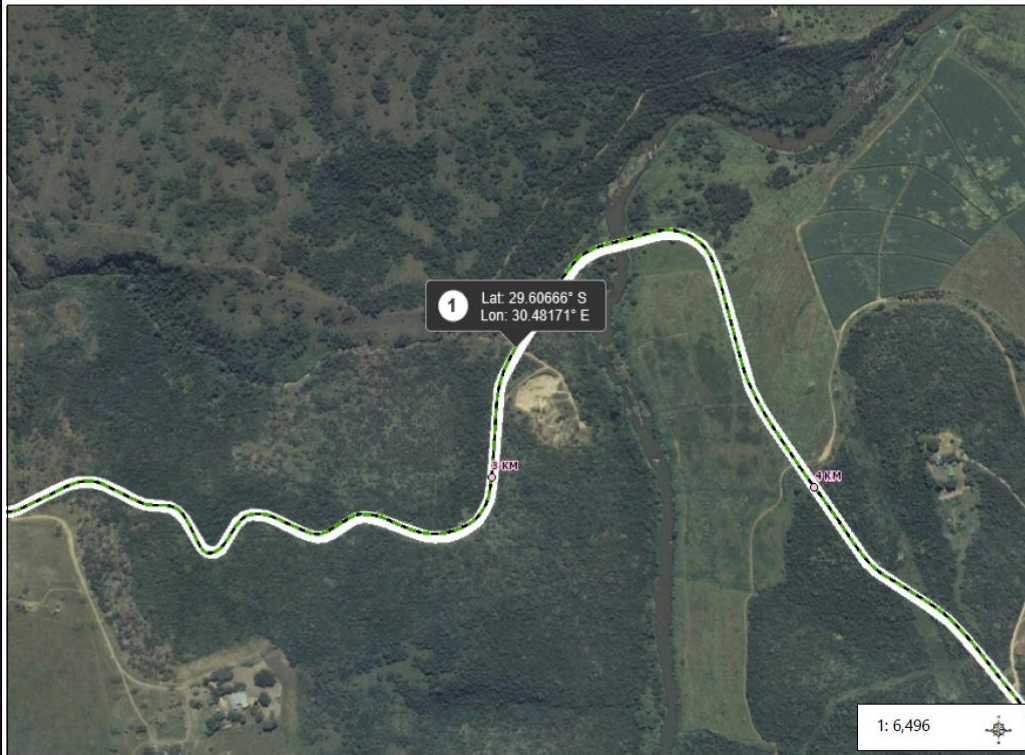
The Gravel Wearing course has been worn away by traffic up to 20mm out of the required 150mm for all the roads and the drainage infrastructure – side and mitre drains – have deteriorated and as a result the road has been eroded by the rain in some areas.

ROUTE TO THE QUARRY, LOCATION OF QUARRY AND AVERAGE DISTANCE

D358 will be sourcing material from a borrow pit located on the road at KM 3.1 and the average haul distance is 4.8 KM's. GPS Co-Ordinates for Quarry is **29.60666°S; 30.48171°E**.

Please see the photos below for some images of the roads condition and the borrow pit.





Legend

- Towns**
 - Capital / City
 - Major
 - Settlement
- DOT Facilities**
 - Area Offices
 - Cost Centre Office
 - DOT_General
 - Driving License Test Centers
 - RTI Stations
 - Vehicle Testing Centers
 - Weigh Bridges
- KM Points**
- National_Road**
 - Blacktop
 - Concrete
- Main**
 - P, Blacktop
 - P, Concrete
 - P, Gravel
- District**
 - D, Blacktop

Notes
 D389@KM3.2

0.3 0 0.16 0.3 Kilometers
 GCS_WGS_1984

Disclaimer: All the data in this website is published in good faith and for general information purposes only. The KwaZulu Natal: Department of Transport (KZN-DoT) does not make any warranties about the completeness, reliability or accuracy of this information. Any action you take upon the data you find on this website is strictly at your own risk and KZN-DoT will not be liable for any losses and/or damages in connection with the use of our website. This map is a user generated static output from this website and is not to be used for navigation.